

♩ = 192

Measures 1-7 of the piece. The music is in 3/4 time with a key signature of one flat (B-flat). The right hand features a complex melodic line with triplets and slurs, while the left hand provides a steady bass accompaniment.

Measures 8-13. The right hand continues with intricate patterns, including triplets and slurs. The left hand has rests in measures 8 and 9, then enters with a bass line in measure 10.

Measures 14-23. The right hand features a triplet in measure 14 and continues with melodic development. The left hand has a prominent bass line with slurs and ties.

Measures 24-32. The right hand has rests in measures 24-26, then enters with a melodic line. The left hand continues with a complex bass accompaniment.

Measures 33-40. The right hand features a triplet in measure 33 and continues with melodic development. The left hand has a complex bass line with slurs and ties.

Measures 41-44. The right hand features a triplet in measure 41 and continues with melodic development. The left hand has a complex bass line with slurs and ties.

45

System 1 (measures 45-48) features a treble and bass staff in B-flat major. The treble staff begins with a half rest, followed by eighth and quarter notes. The bass staff has a more active line with eighth and sixteenth notes, including a triplet of eighth notes in measure 47. Measure 48 ends with a whole rest in the treble and a half note in the bass.

50

System 2 (measures 49-52) continues the piece. The treble staff has a half rest in measure 49, then a quarter note, followed by eighth and quarter notes. The bass staff features a triplet of eighth notes in measure 50 and a dense sixteenth-note passage in measure 51. Measure 52 concludes with a triplet of eighth notes in the treble and a half note in the bass.

53

System 3 (measures 53-58) shows a continuous eighth-note melody in the treble staff. The bass staff provides harmonic support with a series of chords, including a half note in measure 54 and a half note in measure 55, and a half note in measure 56.

59

System 4 (measures 59-63) features a treble staff with eighth and quarter notes. The bass staff includes a triplet of eighth notes in measure 60 and a half note in measure 61. Measure 63 ends with a half note in the treble and a half note in the bass.

64

System 5 (measures 64-69) contains a treble staff with chords and eighth notes. The bass staff has a half note in measure 64 and a half note in measure 65. Measure 69 ends with a half note in the treble and a half note in the bass.

70

System 6 (measures 70-75) shows a treble staff with chords and eighth notes. The bass staff has a half note in measure 70 and a half note in measure 71. Measure 75 ends with a half note in the treble and a half note in the bass.

76

81

82

87

88

94

95

106

107

113

114

119

119

This system contains measures 119 through 124. It features a complex texture with multiple voices in both staves. The right staff has several sixteenth-note passages and chords, while the left staff provides a harmonic foundation with sustained notes and some moving lines. The key signature has one flat (B-flat).

125

This system contains measures 125 through 130. It includes triplet markings (indicated by a '3' over the notes) in both staves. The right staff continues with melodic lines and chords, while the left staff has more active movement, including some sixteenth-note runs. The key signature remains one flat.

130

This system contains measures 130 through 134. The musical texture continues with various chordal and melodic elements. The right staff shows some sixteenth-note patterns, and the left staff has sustained chords and moving lines. The key signature is still one flat.

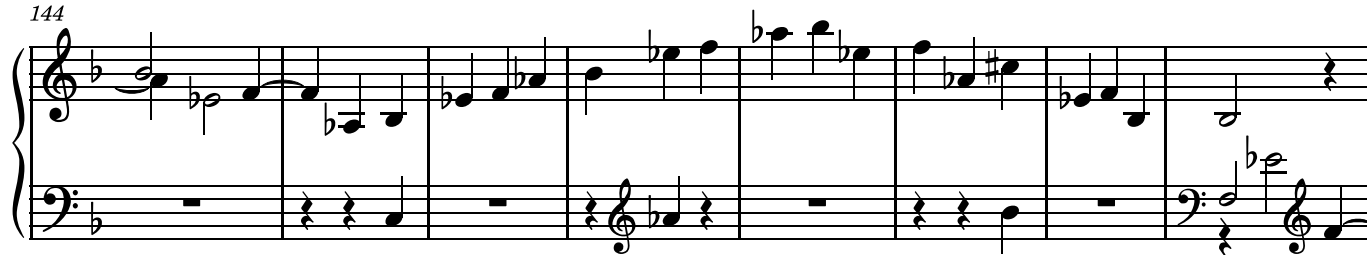
134

This system contains measures 134 through 138. It features triplet markings (indicated by a '3' over the notes) in both staves. The right staff has more active melodic lines, while the left staff provides harmonic support with sustained notes and some movement. The key signature remains one flat.

138

This system contains measures 138 through 143. The right staff continues with melodic lines and chords, while the left staff has sustained notes and some movement. The key signature remains one flat.

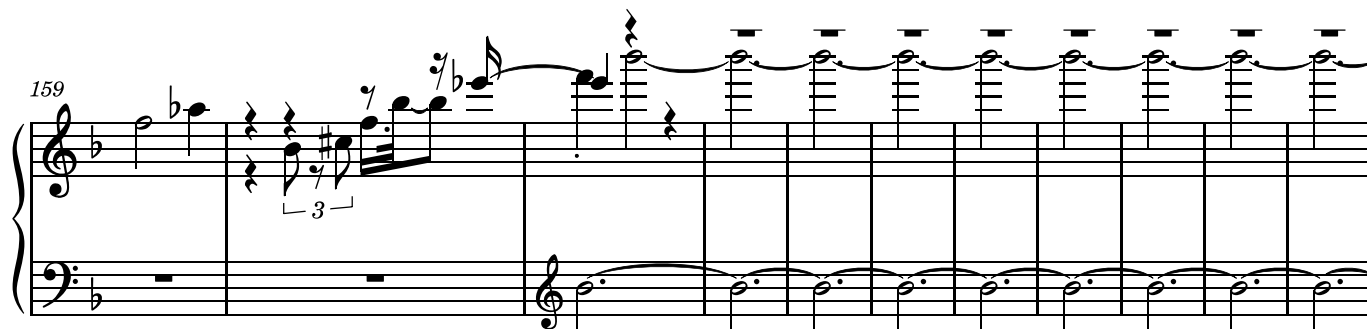
144



152



159



170

